

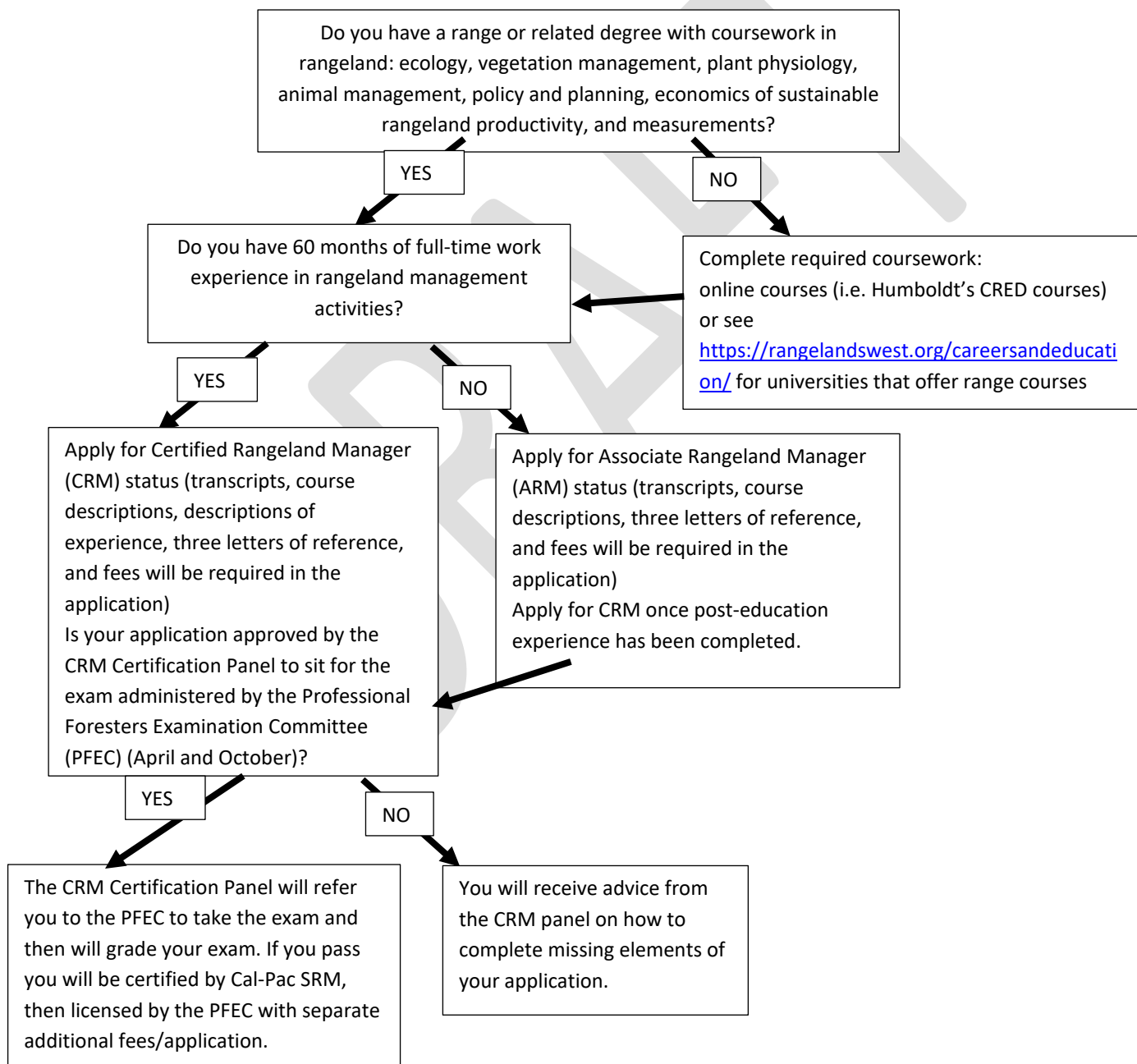
Welcome to our suite of California Rangeland Education (CRED) courses. These classes are being offered through Cal Poly Humboldt's Office of Extended Education to assist you in preparing for the CA Certified Rangeland Manager (CRM) exam or for other purposes. To find out how to apply for the CRM program, see one or both of the following websites and the flow chart below:

<https://bof.fire.ca.gov/projects-and-programs/professional-foresters-registration/rpf-crm-examinations/>

or

<https://calpacsrn.org/certified-rangeland-managers>

CRM Certification Process (simplified)



Passing one or more of these courses does not guarantee that you will pass the CRM exam offered by the PFEC, but the courses have been designed to meet the five educational areas that are specified on the CRM application and will be taught by a variety of qualified educators.

You do not need to be formally admitted to Humboldt to take these courses, but if you successfully complete the courses, you will receive official grades on a Cal Poly Humboldt transcript. Completion of courses may also help in getting qualified for the federal job series 0454 (Rangeland Management Specialist) as well. See:

<https://www.opm.gov/policy-data-oversight/classification-qualifications/general-schedule-qualification-standards/0400/rangeland-management-series-0454/>

If you are interested in taking one or more of these courses, we would like to offer an individualized appointment to understand your past university coursework and experience and to make recommendations on which classes might be most valuable. This onboarding/advising appointment does not replace the formal evaluation of your transcripts in the CRM application process by the CRM Panel. To make an appointment, contact Susan Edinger Marshall at sem11@humboldt.edu with “CRM Course Advising” in the subject line.

Courses and Tentative Dates

FOR 680P Rangeland plant physiology – Susan Edinger Marshall

Field Day – August 23, Online Aug. 27, Sept. 3, 10, 17, 24 (Wednesdays) –2 hour sessions

FOR 680E Rangeland ecol. & vegetation management - David B. Kelley

Field Day – Oct. 11, Online Oct. 14, 21, 28, Nov. 4 (Tuesdays)-2 hour sessions

FOR 680M Rangeland measurements -Marc Horney

Field Day – Oct. 12, Online Oct. 16, 23, 30, Nov. 6 (Thursdays)-2 hour sessions

FOR 680L Rangeland law and economics - Jack Rice

Field Day (Sacramento) Nov. 7, Online Nov. 11, 18, 25, Dec. 2, 9, 16-1.5 hour sessions

FOR 680A Rangeland animal management – looking to confirm an instructor

DRAFT