



# LOCAL HAZARD MITIGATION PLAN

JUNE 2017



Prepared by: Jennifer Mills

City of Hemet

June 2017

## CONTACT INFORMATION

### CITY OF HEMET

Name: Jennifer Mills  
Title: Emergency Services Coordinator  
Address: 510 E. Florida Ave  
City, State and Zip: Hemet, CA 92543

Direct Contact: (951) 765-2451  
Fax: (951) 765-3878  
Email: [Jmills@cityofhemet.org](mailto:Jmills@cityofhemet.org)

# PLAN ADOPTION/RESOLUTION

The City of Hemet will submit plans to Riverside County Emergency Management Department who will forward to California Governor's Office of Emergency Services (CAL OES) for review prior to being submitted to the Federal Emergency Management Agency (FEMA). In addition, we will wait to receive an "Approval Pending Adoption" letter from FEMA before taking the plan to our local governing bodies for adoption. Upon approval, the City of Hemet will insert the signed resolution.

# EXECUTIVE SUMMARY

The purpose of the City of Hemet Local Hazard Mitigation Plan is to identify and assess the risks identified hazards, review past disaster occurrences, estimate the probability of future occurrences and set goals to mitigate potential risks in order to reduce or eliminate long-term risks to people and property from natural, man-made, and technological hazards.

The 2017 LHMP update was prepared pursuant to the requirements of the Disaster Mitigation Act of 2000 to achieve eligibility and potentially secure mitigation funding through Federal Emergency Management Agency (FEMA) Flood Mitigation Assistance, Pre-Disaster Mitigation, and Hazard Mitigation Grant Programs.

The City of Hemet's continuous efforts to maintain a disaster-mitigation strategy is on-going. The 2017 plan integrates with the Riverside County Operational Area Multi-Jurisdictional Local Hazard Mitigation Plan and provides a uniform approach to community mitigation efforts.

The City of Hemet's planning process followed a methodology presented by FEMA and CAL-OES which included conducting meetings with the Operational Area Planning Committee (OAPC) coordinated by Riverside County Emergency Management Department (EMD) comprised of participating Federal, State and local jurisdictions agencies, special districts, school districts, non-profit communities, universities, businesses, tribes and general public.

The 2017 plan identifies vulnerabilities, provides recommendations for prioritized mitigation actions, evaluates resources and identifies mitigation shortcomings, provides future mitigation planning and maintenance of existing plan.

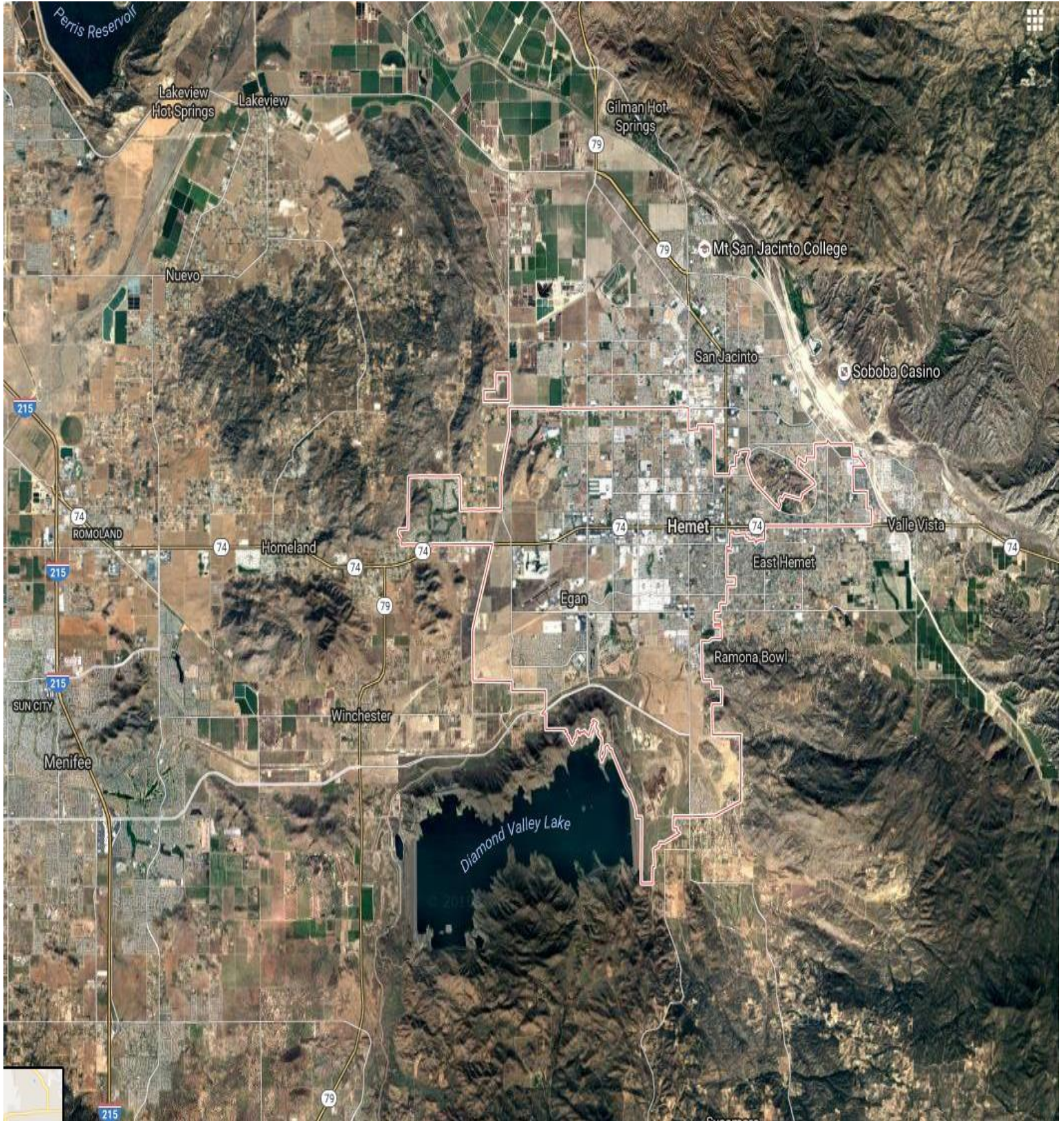
The plan will be implemented upon FEMA approval.

# TABLE OF CONTENT

CONTACT INFORMATION.....	1
PLAN ADOPTION/RESOLUTION .....	2
EXECUTIVE SUMMARY .....	3
TABLE OF CONTENT .....	4
SECTION 1.0 - COMMUNITY PROFILE.....	5
1.1    CITY MAP.....	5
1.2    GEOGRAPHY AND CLIMATE DESCRIPTION .....	6
1.3    BRIEF HISTORY .....	6
1.4    ECONOMY DESCRIPTION.....	6
1.5    POPULATION AND HOUSING .....	8
1.6    BRIEF STATEMENT OF UNIQUE HAZARDS .....	9
1.7    DEVELOPMENT TRENDS AND LAND USE.....	10
SECTION 2.0 - PLANNING PROCESS.....	12
2.1    LOCAL PLANNING PROCESS.....	12
2.2    PARTICIPATION IN REGIONAL (OA) PLANNING PROCESS .....	13
2.3    DATES AVAILABLE FOR PUBLIC COMMENT .....	13
2.4    PLANS ADOPTED BY RESOLUTION .....	13
SECTION 3.0 – MITIGATION ACTIONS/UPDATES.....	13
3.1    UPDATES FROM 2005 PLAN .....	13
3.2    NEW HAZARDS OR CHANGES FROM 2005 .....	13
3.3    BRIEF STATEMENT OF UNIQUE HAZARDS .....	13
3.4    MITIGATION PROJECT UPDATES .....	14
SECTION 4.0 - HAZARD IDENTIFICATION AND RISK ASSESSMENT.....	16
4.1    CRITICAL FACILITIES AND INFRASTRUCTURES.....	16
4.2    ESTIMATING POTENTIAL LOSS .....	16
4.3    TABLE REPLACEMENT VALUES .....	16
4.4    IDENTIFICATION OF RISKS AND VULNERABILITIES .....	17
SECTION 5.0 – COMMUNITY RATING SYSTEM .....	21
5.1    REPETITIVE LOSS PROPERTIES.....	21
5.2    NATIONAL FLOOD INSURANCE PROPERTIES .....	21
SECTION 6.0 - CAPABILITIES ASSESSMENT .....	22
6.1    REGULATORY MITIGATION CAPABILITIES.....	22
6.2    ADMINISTRATIVE/TECHNICAL MITIGATION CAPABILITIES .....	23
6.3    FISCAL MITIGATION CAPABILITIES.....	23
6.5    FUNDING OPPORTUNITIES.....	24
SECTION 7.0 - MITIGATION STRATEGIES .....	25
7.1    GOALS AND OBJECTIVES .....	29
7.2    MITIGATION ACTIONS.....	31
7.3    ON-GOING MITIGATION STRATEGY PROGRAMS.....	32
7.4    FUTURE MITIGATION STRATEGIES .....	32
SECTION 8.0 - PLAN IMPLEMENTATION AND MAINTENANCE PROCESS.....	32
SECTION 9.0 - INCORPORATION INTO EXISTING PLANNING MECHANISMS.....	33
SECTION 10.0 - CONTINUED PUBLIC INVOLVEMENT .....	33
APPENDIX A – PUBLIC NOTICES AND MAPS .....	34
APPENDIX B – INVENTORY WORKSHEETS .....	35
APPENDIX C – PLAN REVIEW TOOL/CROSSWALK.....	36

# SECTION 1.0 - COMMUNITY PROFILE

## 1.1 CITY MAP



## 1.2 GEOGRAPHY AND CLIMATE DESCRIPTION

The City of Hemet is located in the San Jacinto Valley in Riverside County, approximately 80 miles southeast of Downtown Los Angeles. The city covers about half of the valley, which it shares with the neighboring City of San Jacinto to the north and Diamond Valley Lake to the south. The San Jacinto Mountains to north provide a beautiful natural backdrop to the City.

The average annual rainfall in Hemet is approximately 12 inches. The annual high temperature is 82°F while the annual low is 46°F. Summer months have reached highs of over 110°F. Average annual temperature in Hemet, California is 65°F.

## 1.3 BRIEF HISTORY

During the 19<sup>th</sup> century the land in Hemet was used for cattle ranching by Mission San Luis Rey. On January 20, 1910 the City of Hemet was incorporated and maintains a Council-Manager form of government. The incorporation helped to serve the growing city, which also became a trading center for the San Jacinto Valley agriculture of citrus, apricots, peaches, olives and walnuts. During WWII the City of Hemet hosted the Ryan School of Aeronautics, training over 6,000 fliers for the Army Air Force. Hemet-Ryan Airport still exists today in the same location.

## 1.4 ECONOMY DESCRIPTION

The City of Hemet has a vibrant and diverse economy that fosters new business and investment while providing a broad employment base for its citizens. As of 2015 Hemet has 23,722 of its population as part of the civilian labor force (Fig.1.4.1), with the majority being females. The unemployment rate in Hemet is 7.60% (Fig.1.4.3). The median age of residents is 38.1 years of age and the median income is \$31,890.

Figure 1.4.1 – City of Hemet Employment Chart

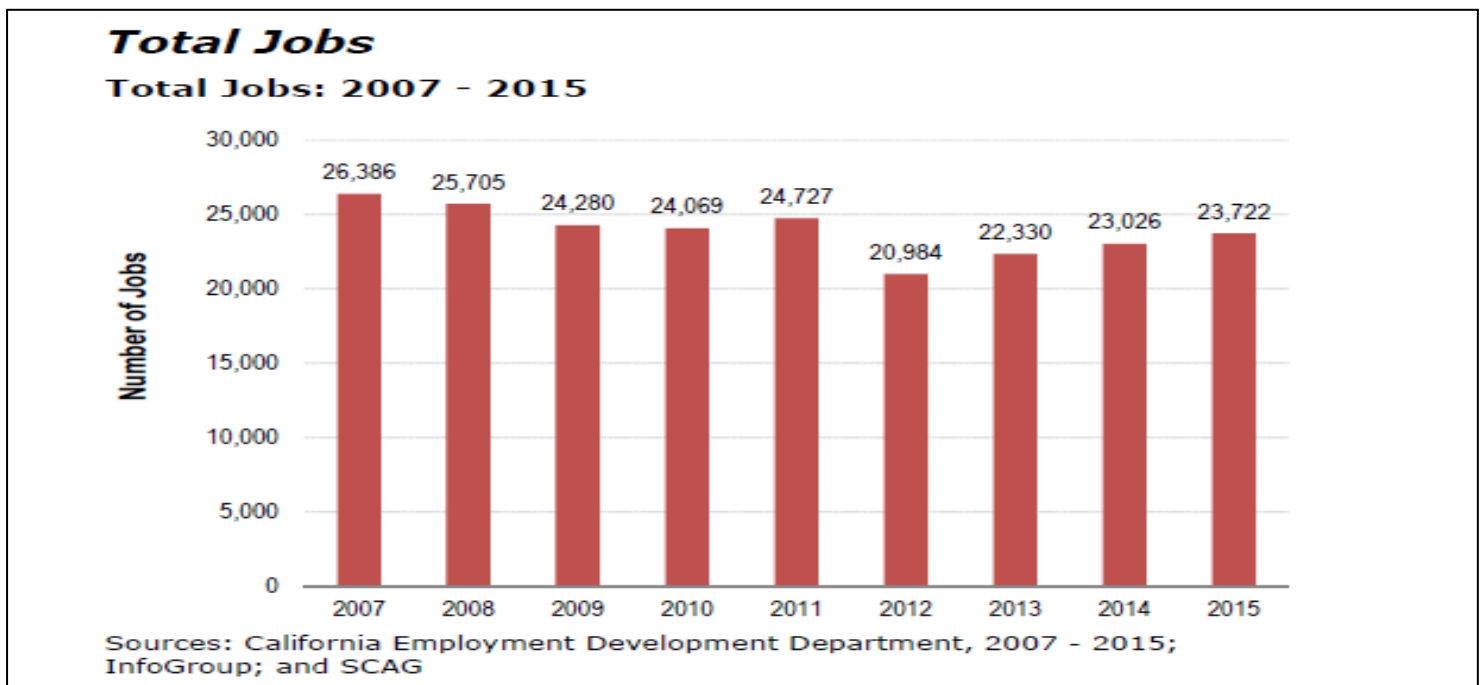


Figure 1.4.2 – City of Hemet Jobs

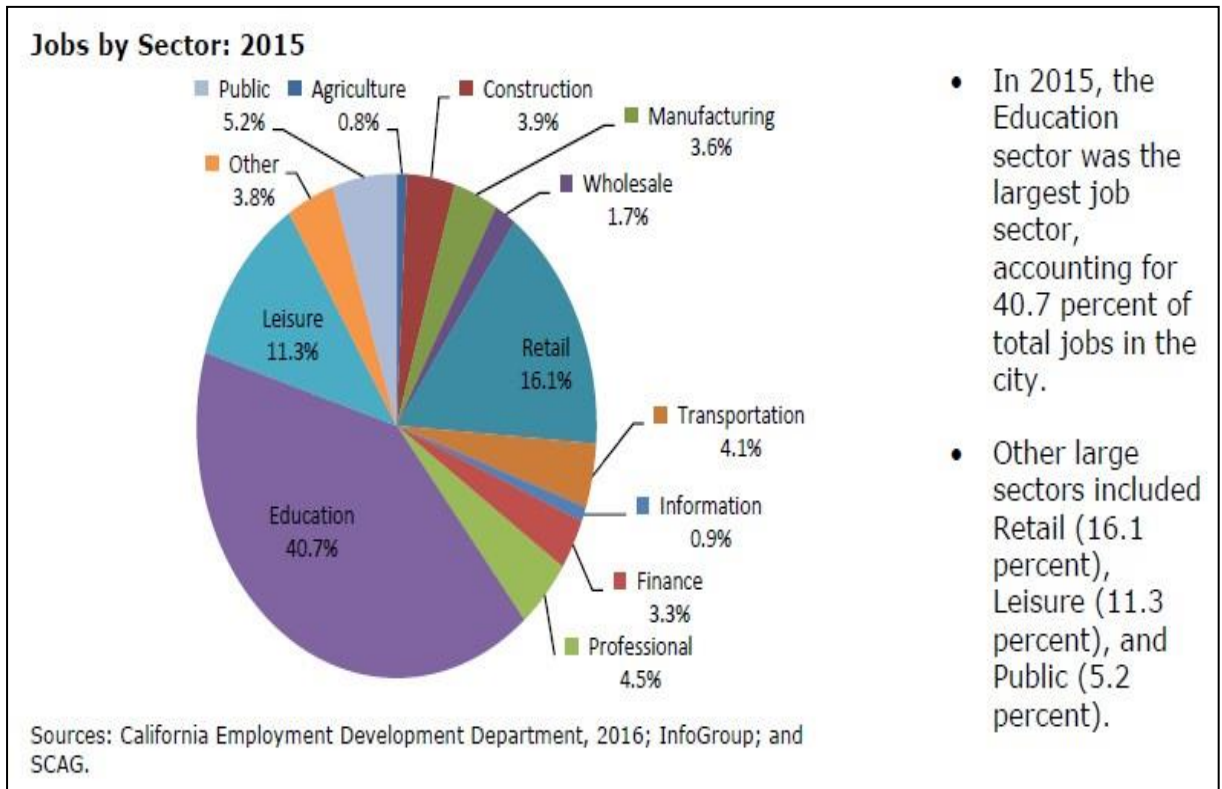
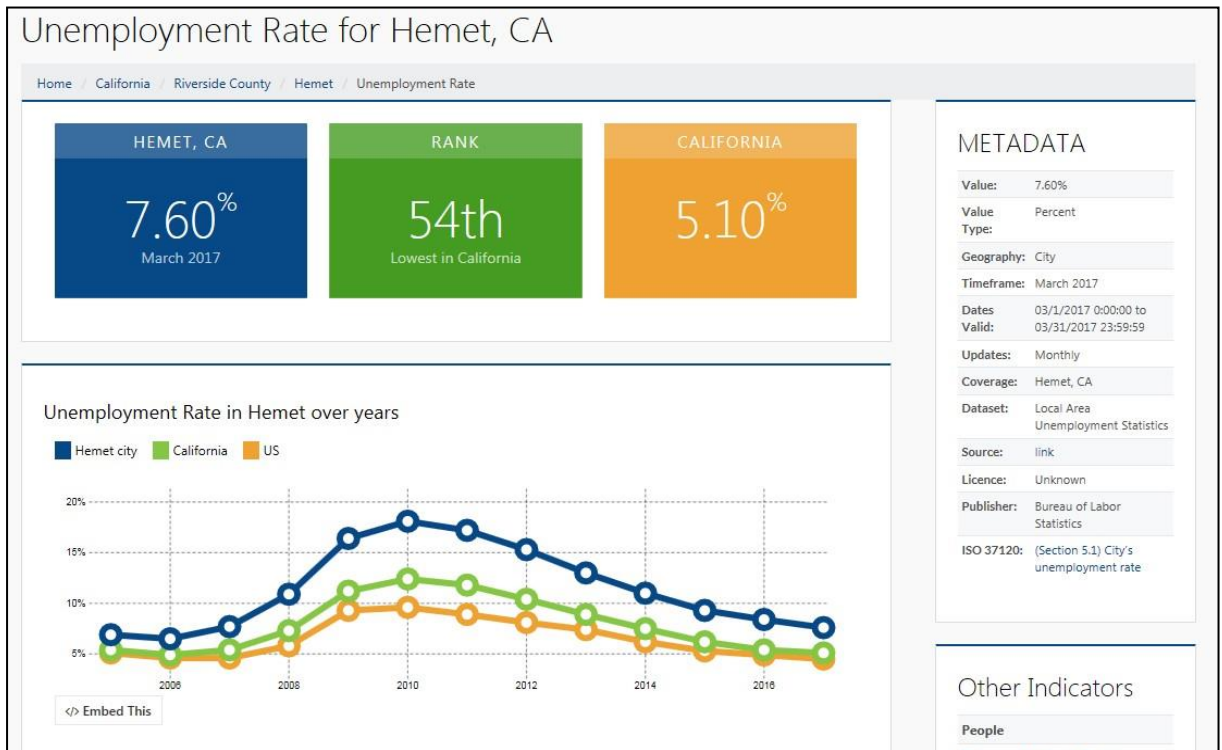


Figure 1.4.3 – City of Hemet Unemployment





## 1.5 POPULATION AND HOUSING

Hemet's population decreased from 81,537 in 2014 to 80,070 in 2016 (fig.1.5.1). Hemet is ranked as having the 7<sup>th</sup> highest population, within Riverside County. Hemet is slowly growing, with many new families and a younger demographic beginning to change the City's long-standing retirement orientation (fig.1.5.2). The City has made great strides to introduce new amenities and services, and to accommodate the needs of its changing population.

Hemet has experienced a growth rate in the housing industry with approximately 35,710 housing units. Between 2000 and 2016 there were permits issued for 6,666 residential units (fig.1.5.3). Median home prices have also gone up 119% from \$100,000 to \$219,000, since 2000.

Figure 1.5.1 - City of Hemet Population Growth Chart

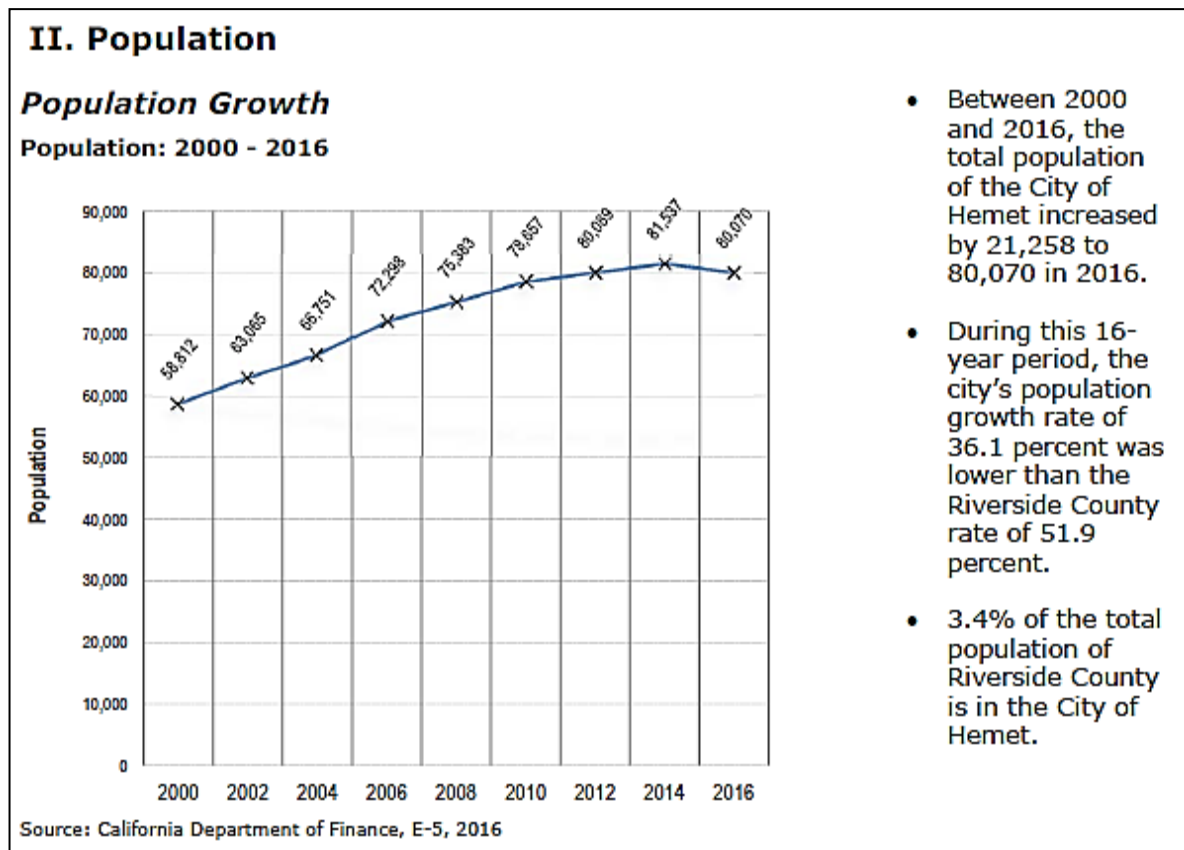


Figure 1.5.2 - Population by Age

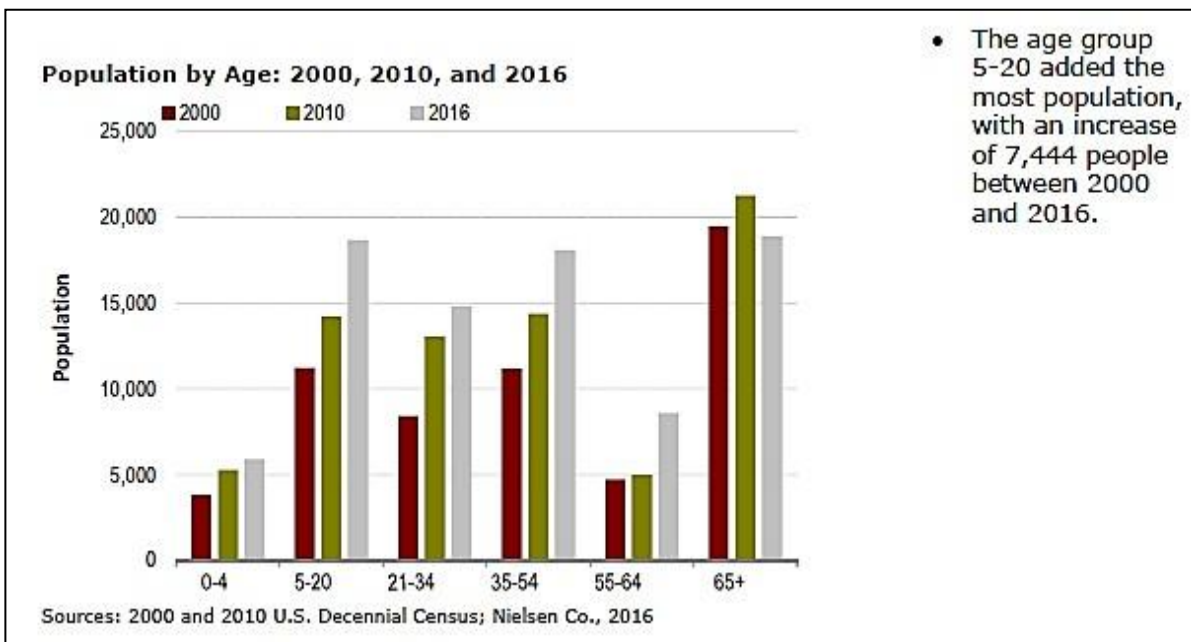
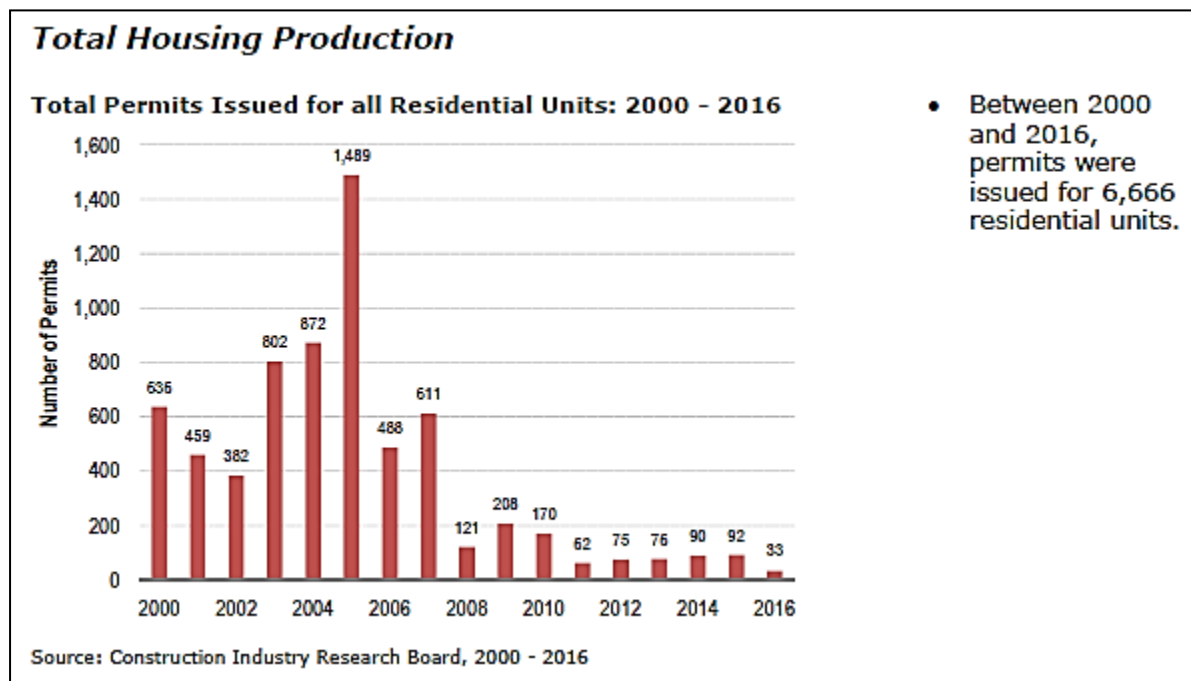


Figure 1.5.3 – City of Hemet Residential Permits Issued



## 1.6 BRIEF STATEMENT OF UNIQUE HAZARDS

The City of Hemet has a few unique hazards. The annual Ramona Bowl, which remains California’s official and longest running outdoor play, as well as the Hemet-Ryan Airshow. These events generate large amounts of people. This is a unique hazard due to the fact that the City of Hemet’s first responders are not equipped to handle the influx of people during an emergency incident. Another unique hazard is the proximity of Hemet to larger metropolitan areas, such as Los Angeles and Orange County. Should those areas be targeted by terrorism or bio-terrorism the city’s first responders would again be strained by the impact it will have in Hemet.

## 1.7 DEVELOPMENT TRENDS AND LAND USE

The City of Hemet has experienced a growth of 21,258 residents since 2000. The number of Homes, Apartments, etc. increased from 25,686 in 2012 to 30,092 in 2016. New residential construction has increased over 15% in the last few years. Builders are finishing out existing tracts and purchasing new phases / lots in existing master plans. Land development & entitlement activity has also increased, with 10 new Tentative Maps in the planning process. In September 2015 the City Council approved the annexation of 995 acres, adjacent to the Southwest city limits. This land use includes 220 acres of Business Park / Industrial, 368 acres of Residential, 246 acres of Commercial / Office / Residential mix, and Open space & trails (fig.1.7.1). Median Home values have gone up 119% since 2000 with 48.6% being single family detached (fig.1.7.2). Since the recession retail sales in the City of Hemet have increased steadily (fig.1.7.3).

Figure 1.7.1 – City of Hemet Annexation Map, 2015

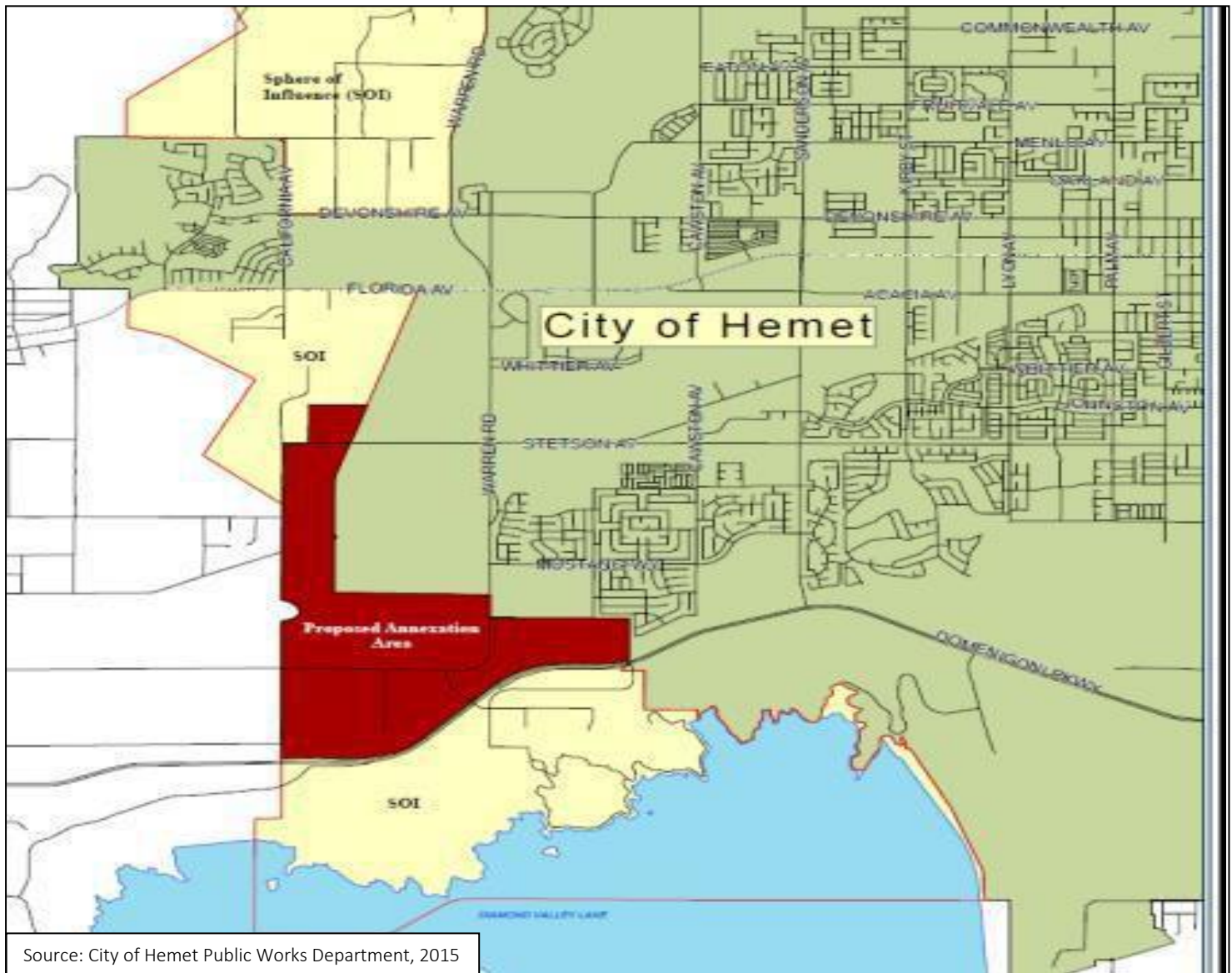


Figure 1.7.2 – City of Hemet Housing Units by Type

## Housing Type

### Housing Type by Units: 2016

Housing Type	Number of Units	Percent of Total Units
Single Family Detached	17,448	48.6 %
Single Family Attached	1,549	4.3 %
Multi-family: 2 to 4 units	2,226	6.2 %
Multi-family: 5 units plus	4,870	13.6 %
Mobile Home	9,838	27.4 %
<b>Total</b>	<b>35,931</b>	<b>100 %</b>

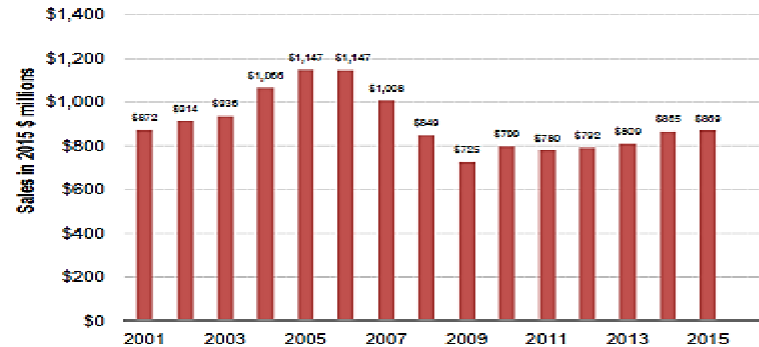
- The most common housing type is Single Family Detached.
- Approximately 53 percent were single family homes and 20 percent were multi-family homes.

Source: California Department of Finance, E-5, 2016

Figure 1.7.3 – City of Hemet Retail Sales

## Real Retail Sales

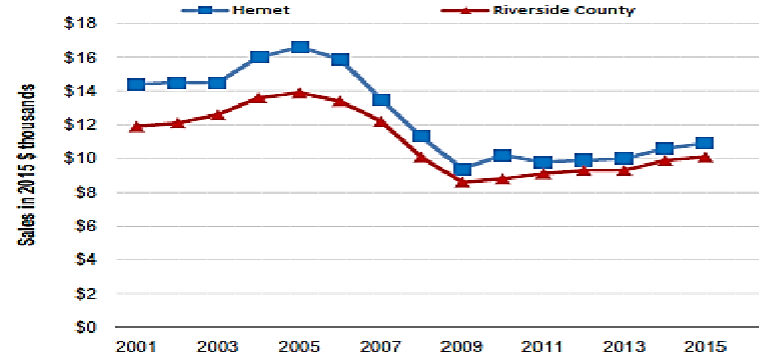
### Real Retail Sales (in 2015 \$ millions): 2001 - 2015



Source: California Board of Equalization, 2001-2015

- Real retail sales decreased by 19.7 percent between 2005 and 2015.

### Retail Sales per Person (in 2015 \$ thousands): 2001 - 2015



Source: California Board of Equalization, 2001-2015

- Between 2001 and 2015, retail sales per person for the city decreased from \$13,565 to \$10,928.

## SECTION 2.0 - PLANNING PROCESS

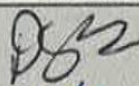


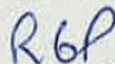


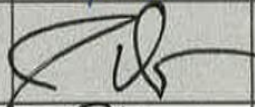
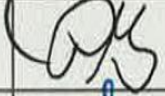

### 2.1 LOCAL PLANNING PROCESS

The planning process involved representatives from the City of Hemet Building/Safety, Planning, Fire, Public Works, Engineering, Water and the Finance department between September 2016 and June 2017 (Figure 2.1.1). These meetings were scheduled by phone, email, and calendar invite and consisted of first reviewing the questions on both the inventory worksheet and the Local Hazard Mitigation Plan (LHMP), followed by reviewing any discrepancies in the 2012 LHMP and making the necessary corrections. The City of Hemet has also completed the General Plan 2030 outlining the Public Safety Element which includes goals, policies, and programs regarding environmental hazards, emergency preparedness, and public safety.

Figure 2.1.1 - LHMP Meeting

## City of Hemet Local Hazard Mitigation Plan Committee

---

NAME	INITIALS	DATE
Scott Brown – Fire Chief		10/10/16, 12/20/16, 2/15/17
Kris Jensen – Public Works Director		10/10/16, 12/20/16
Steve Latino – Engineering Director		10/10/16, 12/20/16
Ron Proze – Water WW Superintendent		10/10/16, 12/20/16
Scott Underwood – Information Technology		10/10/16, 12/20/16
Nino Abad – Acting Engineering Director		2/15/17
Jeff Davis – Police Department – Lieutenant - Patrol		2/15/17
Phil Gairson – Fire Prevention Officer		12/20/16, 2/20/17
Steve Wolny – Facilities Maintenance Supervisor		10/10/16, 12/20/16, 2/15/17

7 in

## 2.2 PARTICIPATION IN REGIONAL (OA) PLANNING PROCESS

The City of Hemet continuously participates in all Local Hazard Mitigation Plan meetings and public hearing. The City of Hemet has attended the LHMP workshop presented by Riverside EMD ESC in charge. All questions and concerns have been answered and resolved by email, phone, and meetings. The City of Hemet also attends the Operational Area Planning Committee (OAPC) meetings every quarter, which is open to the public and stakeholders in the County of Riverside.

## 2.3 DATES AVAILABLE FOR PUBLIC COMMENT

November 15, 2016 – The City of Hemet 2012 LHMP was available to the public for comment via the city website and the social media site, Next Door. One individual pointed out that there were spelling errors and was thanked for their comment. Another individual expressed that he was glad to be privy to such detailed information on the city's local hazard mitigation plan. Over 25 residents thanked the City of Hemet for providing them the opportunity to review and comment.

## 2.4 PLANS ADOPTED BY RESOLUTION

Upon approval by FEMA, the LHMP will be presented to the City Council of Hemet in a public meeting for adoption via an official Resolution.

# SECTION 3.0 – MITIGATION ACTIONS/UPDATES

## 3.1 UPDATES FROM 2012 PLAN

Since the 2012 LHMP the status of the Diamond Valley Lake has changed. The Diamond Valley Lake has been completed and inundation maps have been added to the City of Hemet's Emergency Operations Plan.

## 3.2 NEW HAZARDS OR CHANGES FROM 2012

The Seattle Basin was identified as a flood hazard and added to the local jurisdiction proposed mitigation action and strategy proposal. During the Winter Storm Series 2017 the Seattle Basin crested and flooded the streets and over the curb but did not cause any structural damage. Mitigation efforts were in effect the week prior and an emergency management team was formulated to include: Fire, Public Works, City Manager and Police. Damage estimates for two road repair are still being calculated but will not exceed \$100,000.

## 3.3 BRIEF STATEMENT OF UNIQUE HAZARDS

The City of Hemet has identified annual city events as unique hazards. The location of Hemet to the surrounding area remains isolated. Annual events, such as the Hemet/Ryan Airshow and Ramona Pageant bring in thousands of spectators / tourists. With the amount of resource and first responders the City of Hemet currently has, the city would be depleted and not be able to respond effectively, should a disaster happen during an event.

3.4 MITIGATION PROJECT UPDATES

Figure 3.4.1 - Hemet Capital Improvement Plan

**CIP PROJECT EXPENDITURES BY DEPARTMENTS**

Department and Project	2016/17	2017/18	2018/19	2019/20	2020/221	5-YR TOTAL	Prev Yr App	16/17 GF Req	DIF 16/17
<b>Administration Services - IT</b>									
Enterprise Resource Planning (ERP) System	\$1,300,000	\$0	\$0	\$0	\$0	\$1,300,000	\$153,800	\$0	\$1,000,000
City PEG Video (Public Education & Gvt)	\$0	\$0	\$0	\$0	\$400,000	\$400,000	\$0	\$0	\$0
General Fund Server Hardware Refresh	\$60,000	\$0	\$0	\$0	\$0	\$60,000	\$0	\$0	\$0
Citywide Server Refresh	\$0	\$308,000	\$0	\$0	\$0	\$325,000	\$0	\$0	\$0
<b>Annual Sub-Total</b>	<b>\$1,360,000</b>	<b>\$308,000</b>	<b>\$0</b>	<b>\$0</b>	<b>\$400,000</b>	<b>\$2,085,000</b>	<b>\$153,800</b>	<b>\$0</b>	<b>\$1,000,000</b>
<b>Community Development</b>									
Citywide ADA Transition	\$20,000	\$20,000	\$0	\$0	\$0	\$40,000	\$85,000	\$0	\$0
<b>Annual Sub-Total</b>	<b>\$20,000</b>	<b>\$20,000</b>	<b>\$0</b>	<b>\$0</b>	<b>\$0</b>	<b>\$40,000</b>	<b>\$85,000</b>	<b>\$0</b>	<b>\$0</b>
<b>Engineering</b>									
Citywide Pavement Rehabilitation	\$1,709,000	\$1,760,000	\$1,813,000	\$1,850,000	\$1,850,000	\$8,982,000	\$0	\$0	\$0
Citywide ADA Ramps & Sidewalk Improv.	\$230,000	\$350,000	\$350,000	\$350,000	\$350,000	\$1,630,000	\$0	\$0	\$55,000
Traffic Signal @ Warren/Esplanade	\$988,500	\$0	\$0	\$0	\$0	\$988,500	\$153,000	\$0	\$432,500
Traffic Signal @ Warren/Auto	\$225,000	\$0	\$0	\$0	\$0	\$225,000	\$75,000	\$0	\$225,000
Stetson Bridge Replacement	\$945,000	\$0	\$0	\$0	\$0	\$945,000	\$208,589	\$0	\$68,829
Gilbert Street Rehabilitation	\$628,279	\$0	\$0	\$0	\$0	\$628,279	\$494,690	\$0	\$68,829
State St Storm Drain Replacement	\$0	\$1,325,000	\$0	\$0	\$0	\$1,325,000	\$1,000,000	\$0	\$500,000
Citywide Crack & Slurry Seal	\$1,500,000	\$0	\$0	\$0	\$0	\$1,500,000	\$1,500,000	\$0	\$0
Update Drainage Master Plan/DIF Analysis	\$1,500,000	\$0	\$0	\$0	\$0	\$1,500,000	\$0	\$0	\$1,500,000
Florida Ave EVP	\$0	\$0	\$0	\$288,000	\$0	\$288,000	\$0	\$0	\$0
Signal Sync/Communications Master Plan	\$0	\$100,000	\$0	\$0	\$0	\$100,000	\$0	\$0	\$0
Traffic Signal @ Florida/Mall Entrance	\$0	\$0	\$0	\$75,000	\$225,000	\$300,000	\$0	\$0	\$0
Updated DIF Analysis (Road)	\$300,000	\$0	\$0	\$0	\$0	\$300,000	\$0	\$0	\$300,000
<b>Annual Sub-Total</b>	<b>\$8,025,779</b>	<b>\$3,535,000</b>	<b>\$2,163,000</b>	<b>\$2,563,000</b>	<b>\$2,425,000</b>	<b>\$18,711,779</b>	<b>\$3,431,279</b>	<b>\$0</b>	<b>\$3,150,158</b>
<b>Fire</b>									
Water Hose Replacement	\$150,000	\$0	\$0	\$0	\$0	\$150,000	\$0	\$0	\$150,000
Telestaff Replacement/Upgrade	\$0	\$80,000	\$0	\$0	\$0	\$80,000	\$0	\$0	\$0
<b>Annual Sub-Total</b>	<b>\$150,000</b>	<b>\$80,000</b>	<b>\$0</b>	<b>\$0</b>	<b>\$0</b>	<b>\$230,000</b>	<b>\$0</b>	<b>\$0</b>	<b>\$150,000</b>
<b>Library</b>									
24 Hour Library (Expanding Services)	\$300,000	\$0	\$0	\$0	\$0	\$300,000	\$0	\$0	\$300,000
<b>Annual Sub-Total</b>	<b>\$300,000</b>	<b>\$0</b>	<b>\$0</b>	<b>\$0</b>	<b>\$0</b>	<b>\$300,000</b>	<b>\$0</b>	<b>\$0</b>	<b>\$300,000</b>
<b>Police</b>									
Community Cameras	\$300,000	\$0	\$0	\$0	\$0	\$300,000	\$150,000	\$0	\$300,000
PSEC Radio System	\$0	\$1,300,000	\$0	\$0	\$0	\$1,300,000	\$0	\$0	\$0
<b>Annual Sub-Total</b>	<b>\$300,000</b>	<b>\$1,300,000</b>	<b>\$0</b>	<b>\$0</b>	<b>\$0</b>	<b>\$1,600,000</b>	<b>\$150,000</b>	<b>\$0</b>	<b>\$300,000</b>

## CIP PROJECT EXPENDITURES BY DEPARTMENTS

Department and Project	2016/17	2017/18	2018/19	2019/2020	2020/2021	5-YR TOTAL	Prev Yr App	16/17 GF Req	DIF 16/17
<b>Public Works</b>									
ADA Compliance Projects	\$250,000	\$100,000	\$0	\$0	\$0	\$ 350,000	\$150,000	\$0	\$100,000
Building Painting Project	\$0	\$175,000	\$0	\$0	\$0	\$ 175,000	\$175,000	\$0	\$0
Corp Yard Linear Grate Storm Filters	\$103,260	\$0	\$0	\$0	\$0	\$ 103,260	\$60,000	\$0	\$0
Corp Yard Office Expansion	\$75,000	\$0	\$0	\$0	\$0	\$ 75,000	\$0	\$0	\$0
Covell Lobby Upgrade - ADA & Security	\$60,000	\$0	\$0	\$0	\$0	\$ 60,000	\$0	\$0	\$0
Diesel Equipment Retrofits	\$225,000	\$0	\$0	\$0	\$0	\$ 225,000	\$120,000	\$0	\$0
Energy Management System	\$200,000	\$0	\$0	\$0	\$0	\$ 200,000	\$0	\$0	\$0
Equipment Shop CNG Upgrades	\$200,000	\$0	\$0	\$0	\$0	\$ 200,000	\$0	\$0	\$0
HVAC Replacement (Various Bldgs)	\$300,000	\$0	\$0	\$0	\$0	\$ 300,000	\$300,000	\$0	\$0
Library Fence Expansion	\$225,000	\$0	\$0	\$0	\$0	\$ 225,000	\$0	\$0	\$225,000
Municipal Facility Solar Projects	\$600,000	\$600,000	\$0	\$0	\$0	\$ 1,200,000	\$0	\$0	\$400,000
Recarpet City Hall - 1st Floor	\$180,000	\$0	\$0	\$0	\$0	\$ 180,000	\$0	\$0	\$0
Well Site Security Fencing -Well 4/FS 2	\$60,000	\$0	\$0	\$0	\$0	\$ 60,000	\$0	\$0	\$0
LED Pedestrian Light Conversion	\$750,000	\$0	\$0	\$0	\$0	\$ 750,000	\$0	\$0	\$0
LED Streetlight Conversion	\$3,500,000	\$0	\$0	\$0	\$0	\$ 3,500,000	\$0	\$0	\$1,000,000
Turf Replacement Projects	\$150,000	\$0	\$0	\$0	\$0	\$ 150,000	\$115,000	\$0	\$0
Parks Master Plan	\$300,000	\$0	\$0	\$0	\$0	\$ 300,000	\$150,000	\$0	\$150,000
CNG Combination Jetter/Vactor Unit	\$520,000	\$0	\$0	\$0	\$0	\$ 520,000	\$0	\$0	\$0
Sewer Main Replace/Reline - 1 mile/yr	\$2,640,000	\$1,320,000	\$1,320,000	\$1,320,000	\$1,320,000	\$ 7,920,000	\$970,000	\$0	\$0
Sewer Master Plan	\$70,000	\$0	\$0	\$0	\$0	\$ 70,000	\$70,000	\$0	\$0
Streetlight Acquisition	\$2,500,000	\$500,000	\$0	\$0	\$0	\$ 3,000,000	\$0	\$0	\$0
Heartland - Basin Pump Relocate	\$150,000	\$0	\$0	\$0	\$0	\$ 150,000	\$150,000	\$0	\$0
CNG Dumptruck - Replacement	\$280,000	\$0	\$0	\$0	\$0	\$ 280,000	\$0	\$0	\$0
Distribution Water Main Replacement	\$4,500,000	\$0	\$0	\$0	\$0	\$ 4,500,000	\$2,250,000	\$0	\$0
Distribution Update 4" to 8"	\$250,000	\$250,000	\$250,000	\$0	\$0	\$ 750,000	\$0	\$0	\$0
Echo Hills Distribution Main Replacement	\$0	\$0	\$1,500,000	\$0	\$0	\$ 1,500,000	\$0	\$0	\$0
Echo Hills Additional Water Tank	\$0	\$0	\$3,000,000	\$0	\$0	\$ 3,000,000	\$0	\$0	\$0
Backhoe Replacement (2)	\$230,000	\$0	\$230,000	\$0	\$0	\$ 460,000	\$0	\$0	\$0
New Well Development (3 Wells)	\$1,200,000	\$0	\$1,385,000	\$1,385,000	\$0	\$ 3,970,000	\$0	\$0	\$0
Pipeline to Recharge Ponds	\$1,500,000	\$0	\$0	\$0	\$0	\$ 1,500,000	\$0	\$0	\$0
Radio Read Meter Replacement	\$600,000	\$165,000	\$165,000	\$165,000	\$165,000	\$ 1,260,000	\$100,000	\$0	\$0
Stetson Ave Distribution Main	\$250,000	\$0	\$0	\$0	\$0	\$ 250,000	\$0	\$0	\$0
Valve Truck Purchase	\$125,000	\$0	\$0	\$0	\$0	\$ 125,000	\$0	\$0	\$0
Water Main Line Replacement	\$400,000	\$400,000	\$400,000	\$0	\$0	\$ 1,200,000	\$0	\$0	\$0
Water Storage Tank Recoat	\$275,000	\$275,000	\$275,000	\$275,000	\$0	\$ 1,100,000	\$0	\$0	\$0
Water Quality Treatment	\$3,000,000	\$1,250,000	\$1,250,000	\$1,250,000	\$0	\$ 6,750,000	\$1,750,000	\$0	\$0
Civic Center	\$0	\$0	\$0	\$0	\$0	\$ -	\$0	\$0	\$0
Civic Center Parking Structure	\$0	\$0	\$0	\$0	\$0	\$ -	\$0	\$0	\$0
Fire Station Facility Upgrades -UNFUNDED	\$0	\$0	\$0	\$0	\$0	\$ -	\$0	\$0	\$0
Rubberized playground Turf -UNFUNDED	\$0	\$0	\$0	\$0	\$0	\$ -	\$0	\$0	\$0
Simpson Park Restroom Reroof-UNFUNDED	\$0	\$0	\$0	\$0	\$0	\$ -	\$0	\$0	\$0
Weston Park-Play Structure Replacement	\$0	\$0	\$0	\$0	\$0	\$ -	\$0	\$0	\$0
<b>Annual Sub-Total</b>	<b>\$25,668,260</b>	<b>\$5,035,000</b>	<b>\$9,775,000</b>	<b>\$4,395,000</b>	<b>\$1,485,000</b>	<b>\$46,358,260</b>	<b>\$6,360,000</b>	<b>\$0</b>	<b>\$1,875,000</b>
<b>TOTALS</b>	<b>\$35,824,039</b>	<b>\$10,278,000</b>	<b>\$11,938,000</b>	<b>\$6,958,000</b>	<b>\$4,310,000</b>	<b>\$69,325,039</b>	<b>\$10,180,079</b>	<b>\$0</b>	<b>\$6,775,158</b>

Source: City of Hemet Public Works, 2016



## SECTION 4.0 - HAZARD IDENTIFICATION AND RISK ASSESSMENT

### 4.1 CRITICAL FACILITIES AND INFRASTRUCTURES

Critical Facilities Type	Number
Public Safety Dispatch	1
Emergency Operations Center	1
City Hall	1
Fire Stations	5
Water Reservoirs	4
Water Treatment Plants	0
Waste Water Treatment Plants	0
Hospitals	1
Police Facilities	8
Maintenance Yards	1
Senior Community Center	1
Schools	39
Radio Repeaters	4

### 4.2 ESTIMATING POTENTIAL LOSS

The City of Hemet is susceptible to multiple hazards that threaten our critical infrastructures. Hemet operates in the heart of the city and has the same vulnerabilities as the rest of the county. In a large scale disaster Hemet may experience damage to major roadways (Hwy 74, Hwy 79 and Domenigoni) and essentially be inaccessible to mutual aid resources. The majorities of these infrastructures are located in floodplain and are along the San Jacinto Fault (Fig. 4.4.3). Refer to the Table Replacement Chart in Section 4.3 for assets and estimated replacement values.

### 4.3 TABLE REPLACEMENT VALUES

Name of Asset	Replacement Value (\$)	Hazard Specific Info.
City Hall	\$6 Million	Multi-hazards
Covell Building (EOC)	\$6 Million	Multi-hazards
Fire Station 1	\$1.6 Million	Multi-hazards
Fire Station 2	\$1.6 Million	Multi-hazards
Fire Station 3	\$1.6 Million	Multi-hazards
Fire Station 4	\$ 2 Million	Multi-hazards
Fire Station 5	\$ 1.2 Million	Multi-hazards
Police Department	\$ 32 Million	Multi-hazards
City of Hemet Repeaters (4)	\$1.5 Million	Multi-hazards
City of Hemet Library	\$1.2 Million	Multi-hazards
Hemet Ryan Airport	\$1 Billion	Multi-hazards
Hemet Dispatch Center	\$1.5 Million	Multi-hazards

#### 4.4 IDENTIFICATION OF RISKS AND VULNERABILITIES

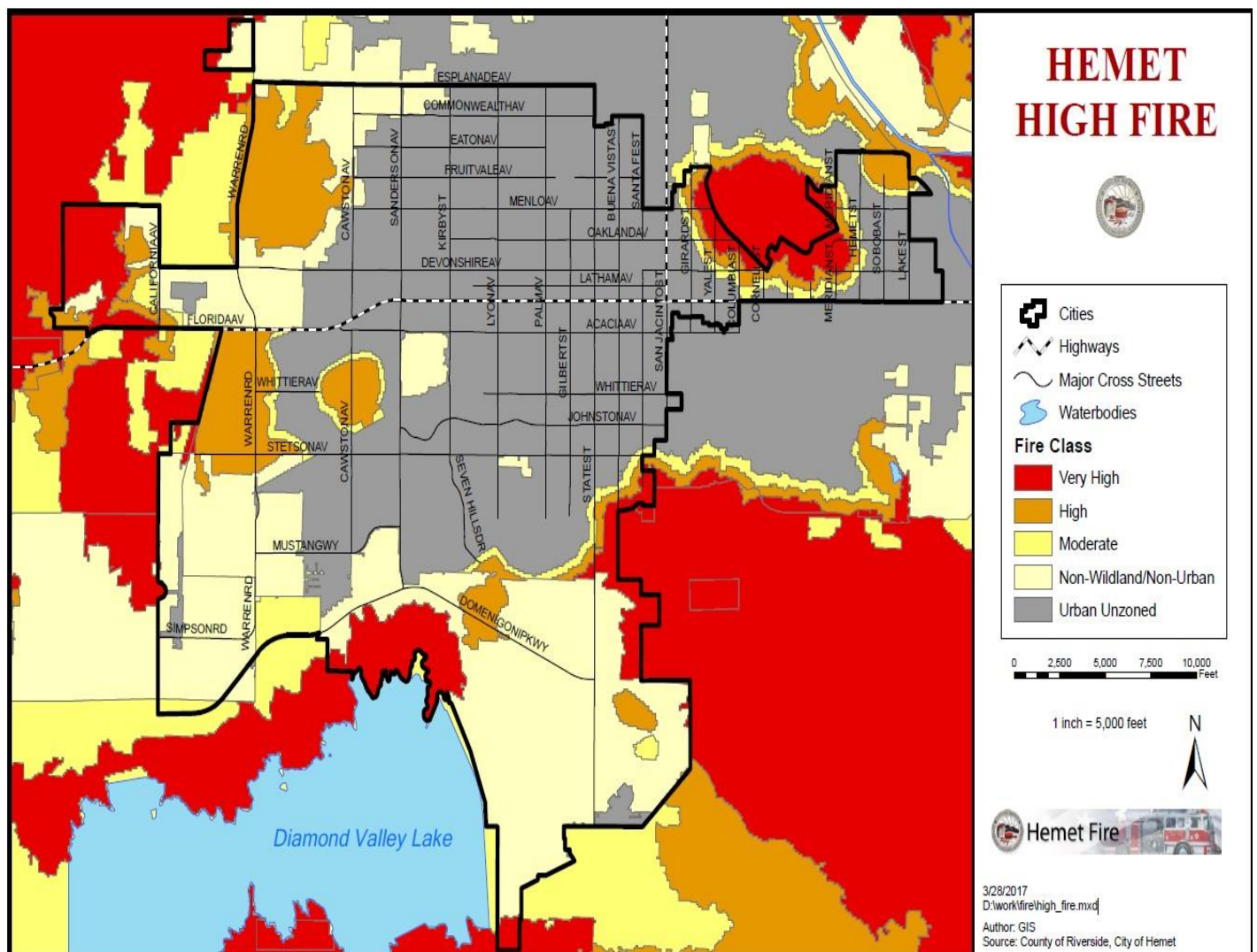
##### 1. Flood – Severity - 2, Probability - 3, Ranking – 2

The City of Hemet has experienced flood conditions during periods of heavy rain. In the past Hemet has sustained damages from flooding and high winds and may continue to experience impacts in the future. According to the recommendations in the Riverside County Master Drainage Plan (MDP) 2015 the City of Hemet will continue to have an increased risk of flood damage, as the area continues to urbanize. This is mainly due to the lack of a proper drainage system to safely convey storm water runoff through the area with the least interruption to public service.

##### 2. Wild Fire - Severity - 2, Probability - 2, Ranking – 4

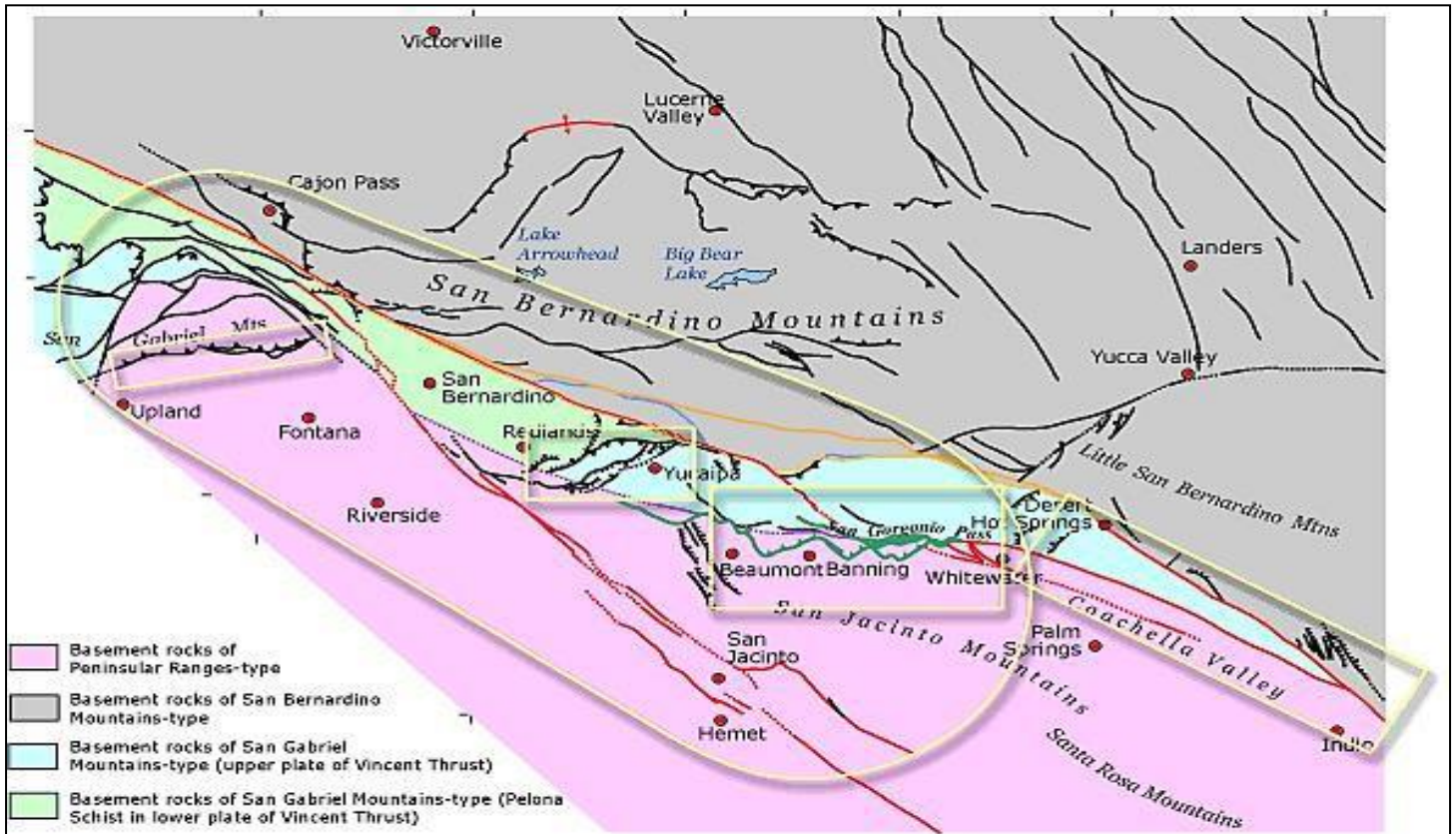
The City of Hemet is located in the San Jacinto Valley and is surrounded by various fire threats located in Figure 4.4.2.

Figure 4.4.2



3. Earthquake - Severity -4, Probability - 4, Ranking – 1  
 Jurisdiction is located in Seismic Hazard Zone. The nearest active earthquake faults are located on Figure 4.4.3.

Figure 4.4.3



Source: USGS, 2017

San Jacinto Fault Zone

Type of Faulting: right-lateral strike-slip; minor right-reverse

Length: 210 km, including Coyote Creek fault

Nearby Communities: Lytle Creek, San Bernardino, Loma Linda, San Jacinto, Hemet, Anza, Borrego Springs, Ocotillo Wells

Most Recent Surface Rupture: within the last few centuries; April 9, 1968, Mw6.5 on Coyote Creek segment

Slip Rate: typically between 7 and 17 mm/year

Interval between Surface Ruptures: between 100 and 300 years, per segment

Probable Magnitudes: MW6.5 - 7.5

San Andreas Fault Zone

Type of Fault: right-lateral strike-slip

Length: 1200 km, 550 km south from Parkfield; 650 km northward

Nearby Communities: Parkfield, Frazier Park, Palmdale, Wrightwood, San Bernardino, Banning, Indio

Last Major Rupture: January 9, 1857 (Mojave segment); April 18, 1906 (Northern segment)

Slip Rate: about 20 to 35 mm per year

Interval between Major Ruptures: average of about 140 years on the Mojave segment; recurrence interval varies greatly -- from under 20 years (at Parkfield only) to over 300 years

Probable Magnitudes: MW6.8 - 8.0

#### San Andreas Fault Zone -- San Gorgonio Pass Area

The San Gorgonio Pass area is fairly complex, geologically speaking. Here the San Andreas fault interacts with other faults (most notably the San Jacinto fault zone and the Pinto Mountain fault) and thereby becomes somewhat fractured, over the distance extending from just north of San Bernardino to just north of Indio, some 110 kilometers (70 miles). Because this deformation has been going on for well over a million years, ancient and inactive strands of the San Andreas Fault can be found here. Other faults in this area have been "reawakened" recently after being dormant for hundreds of thousands of years. There is even evidence to suggest that there is no active, continuous main trace of the San Andreas Fault going all the way through the pass, not even at depth -- implying that the San Andreas Fault may currently be in the process of creating a new fault path through this area! This could also mean that a single, continuous rupture from Cajon Pass to the Salton Sea (a stretch of the San Andreas that has not ruptured in historical times) is unlikely to occur. Fault rupture mechanics are still not well understood, however, and the discontinuity could prove to have little effect on tempering a major earthquake on this southern stretch of the San Andreas Fault zone.

4. Severe Weather- (Heat/Wind/Cold) – Severity - 2, Probability - 3, Ranking –6

The City of Hemet participates with County of Riverside Emergency Management Department plan for extreme heat conditions and has a cooling station located at Simpson Community Center. In the summer of 2016 temperatures reached over 110°. The cooling center was open and staffed to allow citizens a location with air conditioning and cold bottled water.

5. Hazardous Materials – Severity - 3 , Probability - 2, Ranking – 7

A hazardous chemical release in the City of Hemet would most likely involve either legal transportation of chemicals by railroad or commercial truck carrier or the handling of chemicals at a licensed facility. Illegal activities such as a clandestine lab or illegal dumping of chemical waste have been identified as threats within the community. The City has not had a major hazmat release or spill in the past 10 years.

Every year the Hemet Fire Department responds to several illegal labs within the City, mainly located in abandoned buildings and residential properties.

6. Technical Hazards – Severity – N/A , Probability – N/A, Ranking – N/A

The City of Hemet furthest North end is bisected by California Hwy 79 along Florida Ave. To the South end of Hemet the city is bisected by Domenigoni along the Diamond Valley Lake. Together these two corridors are considered the life lines in and out of Hemet and have the highest amount of commercial traffic. There is the potential for hazardous material spills, fires and major traffic collisions.

7. Dam Failure – Severity – 4, Probability – 2, Ranking –8

Although very unlikely, a catastrophic uncontrolled release of water from the Diamond Valley Lake would devastate large areas of the City. This type of event would most likely be due to a damage of one or more of the dam faces structure. During times of rain, the Diamond Valley Lake is able to release the amount of rain that is added to the lake at any given time. The lake is known as an Embankment - Earthen Dam, due to the fact that it

is made of compacted earth. The lake features three earth filled dams (West, East and Saddle Figure 4.4.7) located on either side of the valley and one on the North rim.

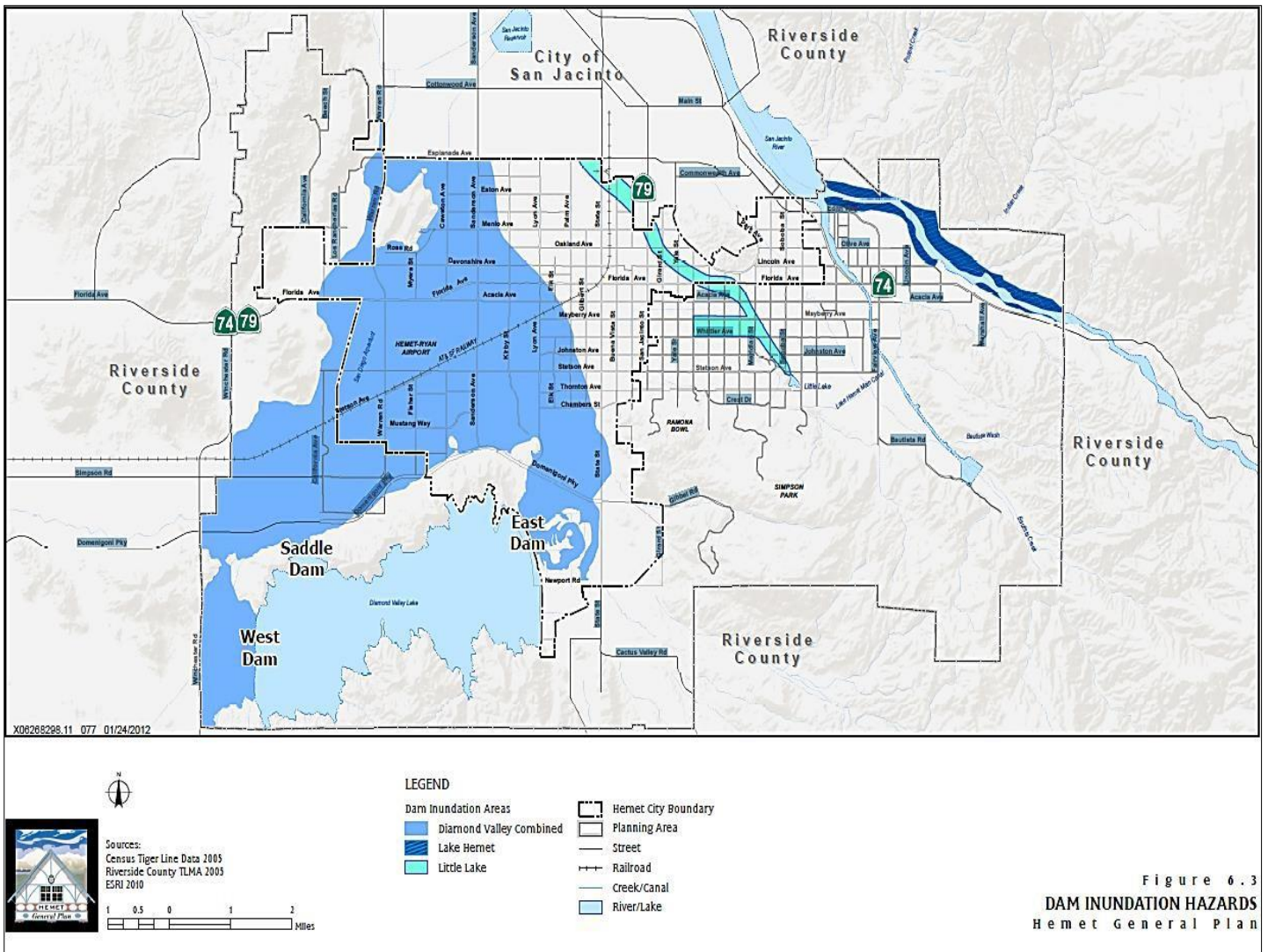


Figure 6.3  
**DAM INUNDATION HAZARDS**  
 Hemet General Plan

Figure 4.4.7

8. Drought – Severity - 3 , Probability - 3, Ranking - 3

The City of Hemet has the same draught vulnerabilities as all jurisdictions in Riverside County. Due to the fact that drought is a gradual phenomenon; one dry year does not constitute a drought in California. It may serve as a reminder to plan for drought conditions. Drought conditions can happen throughout a long period of extreme dry weather when there is not enough rain for the successful growing of crops or the replenishment of water supplies. Droughts may also cause secondary impacts and are a major determinant of wildfire hazards. Drought conditions create greater propensity for fire starts and larger, more prolonged conflagrations fueled by excessively dry vegetation, along with reduced water supply for firefighting purposes. Droughts can also impact the City of Hemet economically, due to its effects on California’s agriculture industry. Significant increases in food prices may also occur due to shortages.

See Part II - Inventory Worksheet Appendix B page 9 for complete ranking chart.

## SECTION 5.0 – COMMUNITY RATING SYSTEM

### 5.1 REPETITIVE LOSS PROPERTIES

There are no repetitive flood properties in the City of Hemet.

### 5.2 NATIONAL FLOOD INSURANCE PROPERTIES

- a. *Describe participation in NFIP, including any changes since previously approved plan.*

The City of Hemet has participated in the National Flood Insurance Program since 1976.

- b. *Date first joined NFIP.* September 17, 1976.

- c. *Identify actions related to continued compliance with NFIP.*

All construction plans are reviewed and checked for compliance. Building permits and Grading are not issued unless plans are in compliance. Floodplain activities are coordinated with Riverside County Flood Control, the primary flood management agency in the County.

- d. *CRS member?* City of Hemet is not an independent CRS member.

- e. *CRS class?* N/A

- f. *Describe any data used to regulate flood hazard area other than FEMA maps.* Hydrology and WQMP studies.

- g. *Have there been issues with community participation in the program?* No

- h. *What are the general hurdles for effective implementation of the NFIP?* None

- i. *Summarize actions related to continued compliance with NFIP.*

All construction plans are reviewed and checked by Building, Planning and Engineering to abiding standards and ordinance. Building permits and Grading are not issued unless plans are agreed upon and in compliance. The City of Hemet coordinates all floodplain activities with Riverside County Flood Control and using hydrology and the Water Quality Management Plan studies.

- ii. *Repetitive Loss Properties.* The City of Hemet has no NFIP insured structures that have been repetitively damaged by floods.

Other risks: The City of Hemet shares the same risks and vulnerabilities as the rest of the planning area.

## SECTION 6.0 - CAPABILITIES ASSESSMENT

### 6.1 REGULATORY MITIGATION CAPABILITIES

Capabilities are the programs and policies currently in use to reduce hazard impacts or that could be used to implement hazard mitigation activities. This capabilities assessment is divided into five sections

- Regulatory Mitigation Capabilities
- Administrative And Technical Mitigation Capabilities
- Fiscal Mitigation Capabilities
- Mitigation Outreach And Partnerships
- Funding Sources

Regulatory Tool	Yes/No	Comments
General plan	Yes	City of Hemet General Plan 2030, Updated in 2012. Utilized safety elements to incorporate and develop mitigation strategies
Zoning ordinance	Yes	Ordinance No. 621, City of Hemet Municipal code Section 90. Utilized for development trends
Subdivision ordinance	Yes	Ordinance No. 1564, City of Hemet Municipal code Section 70. Utilized for development trends
Site plan review requirements	Yes	Application, DRC review, Formal Submittal, Review, Approval, Final Field Inspection, Certificate of Occupancy. Utilized for development trends
Floodplain ordinance	Yes	City of Hemet Code of Ordinance Section 14, Article V, Section 14-231. Utilized for public outreach and educational awareness.
Other special purpose ordinance (storm water, water conservation, wildfire)	Yes	City of Hemet Code of Ordinance Section VIII – X Utilized for public outreach and educational awareness.
Building code	Yes	CA Building Code, Part 2 of Title 24 of the California Code of Regulations
Fire department ISO rating	Yes	Rating 4
Erosion or sediment control program	Yes	City of Hemet Code of Ordinance Chapter 67: Sec. 67-18. Utilized for public outreach and educational awareness.
Storm water management program	Yes	City of Hemet Code of Ordinance Article X: Sec. 14-471. Utilized for public outreach and educational awareness.

Capital improvements plan	Yes	Adopted Resolution 4670 on April 26, 2016. 5 year plan, updated annually. Utilized to develop project budget, priorities, and develop mitigation strategies
Economic development plan	Yes	The Office of Economic Development manages the city's business attraction, retention, expansion and business start-up programs. Utilized for community profile.
Local emergency operations plan	Yes	Currently being updated by the City of Hemet's Emergency Services Coordinator. Utilized for public outreach and educational awareness.
Flood Insurance Study or other engineering study for streams	Yes	Follow FIRM provided by FEMA. Utilized for development trends

## 6.2 ADMINISTRATIVE/TECHNICAL MITIGATION CAPABILITIES

Personnel Resources	Yes/No	Department/Position
Planner/engineer with knowledge of land development/land management practices	Yes	Engineering Director
Engineer/professional trained in construction practices related to buildings and/or infrastructure	Yes	Engineering Director
Engineer with an understanding of natural hazards	Yes	Engineering Director
Personnel skilled in GIS	Yes	Information Technology (GIS)
Full time building official	Yes	Building & Safety
Floodplain manager	Yes	Engineering
Emergency manager	Yes	Emergency Services Coordinator
Grant writer	No	Secondary duty for departments
GIS Data—Land use	Yes	IT / GIS Specialist
GIS Data—Links to Assessor's data	Yes	IT / GIS Specialist
Warning systems/services (Reverse 9-11, outdoor warning signals)	Yes	VESTA ALERT SYSTEM

## 6.3 FISCAL MITIGATION CAPABILITIES

Financial Resources	Accessible/Eligible to Use (Yes/No)	Comments
Community Development Block Grants	Yes	
Capital improvements project funding	Yes	
Authority to levy taxes for specific purposes	Yes	Voter approval required
Fees for water, sewer, gas, or electric services	Yes	Water
Impact fees for new development	Yes	
Incur debt through general obligation bonds	Yes	Voter approval required



Incur debt through special tax bonds	Yes	Voter approval required
Incur debt through private activities	Yes	
Withhold spending in hazard prone areas	N/A	
Other		

#### 6.4 MITIGATION OUTREACH AND PARTNERSHIPS

The City of Hemet is heavily involved in training its citizens in the Community Emergency Response Team program through FEMA. Since 2006 we have successfully trained and released over 600 residents in preparedness and mitigation practices, as well as provided advanced training to over 100 CERT members who are certified and trained to respond when the City of Hemet needs them. The use of CERT members is to go back to their communities and educate their neighbors and household in emergency preparedness. Some members have also become First Aid/CPR/AED certified by the Hemet Fire Department contracted EMS Coordinator. The city also participates in regional mass care and shelter planning and incorporates planning for access and functional needs individuals. The Fire Department also attends additional special community events, which provides public education materials to the public. Some of the organizations that request or provide help include Hemet Unified School District, Hemet Rotary Club, Salvation Army, Businesses and Faith base organizations.

#### 6.5 FUNDING OPPORTUNITIES

The Hazard Mitigation Grant Program (HMGP) is authorized by Section 404 of the Robert T. Stafford Disaster Relief and Emergency Assistance Act, as amended (the Stafford Act), Title 42, United States Code (U.S.C.) 5170c. The key purpose of HMGP is to ensure that the opportunities to take critical mitigation measures to reduce the risk of loss of life and property from future disasters are not lost during the reconstruction process following a disaster. HMGP is available, when authorized under a Presidential major disaster declaration, in the areas of the State requested by the Governor. The amount of HMGP funding available to the Applicant is based upon the total Federal assistance to be provided by FEMA for disaster recovery under the Presidential major disaster declaration.

The Flood Mitigation Assistance (FMA) program is authorized by Section 1366 of the National Flood Insurance Act of 1968, as amended (NFIA), 42 U.S.C. 4104c, with the goal of reducing or eliminating claims under the National Flood Insurance Program (NFIP).

The Repetitive Flood Claims (RFC) program is authorized by Section 1323 of the NFIA, 42 U.S.C. 4030, with the goal of reducing flood damages to individual properties for which one or more claim payments for losses have been made under flood insurance coverage and that will result in the greatest savings to the National Flood Insurance Fund (NFIF) in the shortest period of time.

The Pre-Disaster Mitigation (PDM) program is authorized by Section 203 of the Stafford Act, 42 U.S.C. 5133. The PDM program is designed to assist States, Territories, Indian Tribal governments, and local communities in implementing a sustained pre-disaster natural hazard mitigation program to reduce overall risk to the population and structures from future hazard events, while also reducing reliance on Federal funding from future disasters.

The Severe Repetitive Loss (SRL) program is authorized by Section 1361A of the NFIA, 42 U.S.C. 4102a, with the goal of reducing flood damages to residential properties that have experienced severe repetitive losses under flood insurance coverage and that will result in the greatest amount of savings to the NFIF in the shortest period of time.

Table 6.5.1 – Grant Funding Opportunities for Mitigation

<b>Grant Name</b>	<b>Agency</b>	<b>Purpose</b>	<b>Contact</b>
Pre-Disaster Mitigation Program (PDM)	U.S. Department of Homeland Security, Federal Emergency Management Agency	To provide funding for States, and communities for cost-effective hazard mitigation activities which complement a comprehensive hazard mitigation program and reduce injuries, loss of life, and damage and deconstruction of property.	FEMA 500 C. Street, SW Washington, DC 20472 Phone: (202) 646-4621 <a href="http://www.fema.gov">www.fema.gov</a>
Hazard Mitigation Grant Program	U.S. Department of Homeland Security: Federal Emergency Management Agency	To prevent future losses of lives property due to disasters; to implement State of local hazard mitigation plans; to enable mitigation measures to be implemented during immediate recovery from a disaster; and to provide funding for previously identified mitigation measures to benefit the disaster area.	FEMA 500 C. Street, SW Washington, DC 20472 Phone: (202) 646-4621 <a href="http://www.fema.gov">www.fema.gov</a>
Flood Mitigation Assistance Program (RFC)	U.S. Department of Homeland Security	To help States and communities plan and carry out activities designed to reduce the risk of flood damage to structures insurable under the NFIP.	FEMA 500 C. Street, SW Washington, DC 20472 Phone: (202) 646-4621 <a href="http://www.fema.gov">www.fema.gov</a>
Repetitive Flood Claims Program (FRC)	U.S. Department of Homeland Security	To assist States and communities and reduce flood damages to insured properties that has had one or more claims to the NFIP.	FEMA 500 C. Street, SW Washington, DC 20472 Phone: (202) 646-4621 <a href="http://www.fema.gov">www.fema.gov</a>
Severe Repetitive Loss (SRL) Program	U.S. Department of Homeland Security	To Provide funding to reduce or eliminate the long-term risk of flood damage to severe repetitive loss structures insured under the NFIP.	FEMA 500 C Street S.W. Washington, DC 20472 Phone (202) 646-4621 <a href="http://www.fema.gov">www.fema.gov</a>
	U.S. Department of Homeland Security;	To encourage the development of comprehensive emergency	FEMA 500 C Street S.W.

Emergency Management Performance Grants (EMPG)	Federal Emergency Management Agency	management at the State and local level and to improve emergency management planning, preparedness, mitigation, response and recovery capabilities.	Washington, DC 20472 Phone (202) 646-4621 <a href="http://www.fema.gov">www.fema.gov</a>
Community Development Grant Program (CDBG)	U.S. Department of Housing and Urban Development	To develop viable urban communities by providing decent housing and a suitable living environment. Principally for low-to-moderate income individuals.	HUD 451 7 <sup>th</sup> Street, S.W. Washington, DC 20410 Phone: (202) 708-3587 <a href="http://www.hud.gov">www.hud.gov</a>
Public Assistance Program (PA)	U.S. Department of Homeland Security, Federal Emergency Management Agency	To provide supplemental assistance to States, local governments, and certain private nonprofit organizations to alleviate suffering and hardship resulting from major disasters or emergencies declared by the President. Under Section 406, Public Assistance funds may be used to mitigate the impact of future disasters.	FEMA 500 C Street S.W. Washington, DC 20472 Phone (202) 646-4621 <a href="http://www.fema.gov">www.fema.gov</a>
Flood Control Works/Emergency Rehabilitation	U.S. Department of Defense Army Corps of Engineers	To assist in the repairs and restoration of public works damaged by flood, extraordinary wind, wave, or water action.	USACE 20 Massachusetts Avenue, N.W. Washington, DC 20314 Phone: (202) 761-0001 <a href="http://www.usace.army.mil">www.usace.army.mil</a>
Emergency Watershed Protection	U.S. Department of Agriculture, Natural Resource Conservation Service	To provide emergency technical and financial assistance to install or repair structures which reduce runoff and prevents soil erosion to safeguard life and property.	NRCS PO BOX 2890 Washington, DC 20013 Phone: (202) 720-3527 <a href="http://www.nrcs.usda.gov">www.nrcs.usda.gov</a>

Watershed Protection and Flood Prevention	U.S. Department of Agriculture, Natural Resource Conservation Service	To provide technical and financial assistance in planning and executing works of improvement to protect, develop, and use land and water resources in small watersheds.	NRCS PO BOX 2890 Washington, DC 20013 Phone: (202) 720-3527 <a href="http://www.nrcs.usda.gov">www.nrcs.usda.gov</a>
Land and Water Conservation Fund Grants	U. S. Department of the Interior, National Park Service	To acquire and develop outdoor recreation areas and facilities for the general public, to meet current and future needs.	NPS PO Box 37217 Washington, DC 20013-7127 Phone: (202) 565-1200 <a href="http://www.nps.gov">www.nps.gov</a>
Disaster Mitigation and Technical Assistance Grants	U.S. Department of Commerce, Economic Development Administration	To help States and localities to develop and /or implement a variety of disaster mitigation strategies.	EDA Herbert C. Hoover Building Washington, DC 20230 Phone: (800) 345-1222 <a href="http://www.eda.gov">www.eda.gov</a>
Pre-Disaster Mitigation Loan Program	U. S. Small Business Administration	To make low-interest; fixed-rate loans eligible to small businesses for the purpose of implementing mitigation measures to protect business property from damage that may be caused by future disasters.	SBA 1110 Vermont Avenue, N.W., 9th Floor Washington, DC 20005 Phone: (202) 606-4000 <a href="http://www.sba.gov">www.sba.gov</a>
Watershed Surveys and Planning	U.S. Department of Agriculture, Natural Resource Conservation Service	To provide planning assistance to Federal, State, and local agencies for the development of coordination water and related land resources programs in watersheds and river basins.	NRCS PO Box 2890 Washington, DC 20013 Phone: (202) 720-3527 <a href="http://www.nrcs.usda.gov">www.nrcs.usda.gov</a>

Clean Water Act Section 319 Grants	U.S. Environmental Protection Agency	To implement non-point source programs, including support for the non-structural watershed resource restoration activities.	EPA Ariel Rios Building 1200 Pennsylvania Avenue, N.W. Washington, DC 20460 Phone: (202) 272-0167 <a href="http://www.epa.gov">www.epa.gov</a>
National Earthquake Hazards Reduction Program (NEHRP)	U.S. Department of Homeland Security, Federal Emergency Management Agency	To mitigate earthquake losses that can occur in many parts of the nation providing earth science data and assessments essential for warning of imminent damaging earthquakes, land-use planning, engineering design, and emergency preparedness decisions.	FEMA 500 C Street S.W. Washington, DC 20472 Phone (202) 646-4621 <a href="http://www.fema.gov">www.fema.gov</a>
Assistance to Firefighters Grant	U. S. Department of Homeland Security, Federal Emergency Management Agency	Competitively awarded project grants to provide direct assistance, on a competitive basis, to fire departments for the purpose of protecting the health and safety of the public and firefighting personnel against fire and fire-related hazards	FEMA 500 C Street S.W. Washington, DC 20472 Phone (202) 646-4621 <a href="http://www.fema.gov">www.fema.gov</a>
Fire Management Assistance Grants	U. S. Department of Homeland Security, Federal Emergency Management Agency	To provide project grants and the provision of specialized services for the mitigation, management, and control of fires that threatens such destruction as would constitute a major disaster.	FEMA 500 C Street S.W. Washington, DC 20472 Phone (202) 646-4621 <a href="http://www.fema.gov">www.fema.gov</a>
Emergency Streambank and Shoreline Protection	U. S. Department of Defense, Army Corps of Engineers	To prevent erosion damages to public facilities by the emergency construction or repair of streambank and shoreline protection works.	USACE 20 Massachusetts Avenue, N.W. Washington, DC 20314 Phone: (202) 761-0001 <a href="http://www.usace.army.mil">www.usace.army.mil</a>

Small Flood Control Projects	U.S. Departments of Defense, Army Corps of Engineers	To reduce flood damages through small flood control projects not specifically authorized by Congress.	USACE 20 Massachusetts Avenue, N.W. Washington, DC 20314 Phone: (202) 761-0001 <a href="http://www.usace.army.mil">www.usace.army.mil</a>
Rural Fire Assistance (RFA)	Fish and Wildlife Service	To implement the National Fire Plan by increasing firefighter safety and enhancing the knowledge and fire protection capability of rural and volunteer fire departments by providing basic wild land firefighting supplies and equipment.	U.S. Postal Service (USPS) Mail Address: U.S. Department of Health and Human Services 200 Independence Avenue, S.W. Washington, DC 20201 <a href="http://www.grants.gov">www.grants.gov</a>

## SECTION 7.0 - MITIGATION STRATEGIES

### 7.1 GOALS AND OBJECTIVES

The City of Hemet has the following goals and objectives:

#### Goal 1: Reduce Loss of Life and Property

*Objective 1.1:* Provide timely notification and direction to the public when the potential for hazards or emergencies arise.

*Objective 1.2:* Strengthen overall community resiliency.

*Objective 1.3:* Protect public health through preparing for, responding to and recovering from the effects of natural or man-made disasters.

#### Goal 2: Provide Protection of Critical Infrastructures from potential Hazards

*Objective 2.1:* Reduce hazard impacts to critical facilities, utilities and services through the implementation of low cost mitigation strategies.

*Objective 2.2:* Maintain partnerships with utilities and services and continue to participate in joint training opportunities.

Goal 3: Improve Community and City Awareness about Hazards and Associated Vulnerabilities that Threaten our Community

Objective 3.1: Coordinate with local agencies and organizations to educate all residents and businesses to take appropriate action to safeguard life and property during and after emergencies.

Objective 3.2: Increase public awareness about the nature and extent of hazards that are exposed to, where they occur, what the vulnerabilities are and recommended preparedness and responses to identified hazards.

Objective 3.3: Create and continue an outreach program, provide educational resources and develop and provide training.

Goal 4: Improve the Community's Capability to Mitigate Hazards and Reduce Exposure to Hazard Related Losses.

Objective 4.1: Adopt/maintain building codes to meet mandated earthquake standards.

Objective 4.2: Reduce damage to property from earthquake events.

Objective 4.3: Provide resources and training to the public on ways to mitigate, prepare and respond during a seismic event and minimize the impacts to health and public safety.

Objective 4.4: Coordinate efforts between public safety, building officials, communication staff and others to create public awareness programs.

Goal 5: Reduce Flood and Storm Related Losses.

Objective 5.1: Identify existing facilities located in the 100-year floodplain along emergency access routes.

Objective 5.2: Reduce localized flooding within the City's storm drain systems.

Objective 5.3: Provide better collection of data related to severe weather events.

Objective 5.4: Partner with county flood control and other agencies to identify and develop plans to reduce flooding hazards.

Goal 6: Grow the Community's Understanding on the Importance of Disaster Preparedness.

Objective 6.1: Develop and maintain the City's Community Emergency Response Team (CERT) training and resources.

Objective 6.2: Utilize social media to notify members of training opportunity for those who seek to become more active CERT members.

Objective 6.3: Develop CERT meetings to discuss advanced training opportunities available in the City and County.

## 7.2 MITIGATION ACTIONS

The City of Hemet continues to develop long-term and short-term mitigation actions, listed below, for its hazards that were considered as a high priority.

### *Earthquake:*

#### Mitigation Strategy:

The City of Hemet has identified all URM's within the City and has since worked on getting them demolished or notified property owners of the need to retrofit to compliance. The number of URM's has decreased from 28 to 10 within the city. The following locations have been identified: 102, 122, 124, 190, 213, and 215 E. Florida Avenue & 105, 111, 113, 123 N. Harvard Street. All of which are located in the Downtown District of Hemet.

Responsible Dept: Building and Safety

Funding: Unknown

Status: continuing and ongoing

### *Flooding:*

#### Mitigation Strategy:

During the California Winter Storm Series 2017, the City of Hemet worked to clear the water and debris from the Seattle Basin and set up two additional pumps to divert water into nearby empty ponds, in order to mitigate the flood hazard associated with that basin.

Status: Completed

### *Drought:*

#### Mitigation Strategy:

Decrease water usage on public and private parcels. Promote adoption of drought tolerant landscaping

Responsible Dept: Planning and Public works

Funding: unknown

Status: Ongoing

### *WildFire:*

#### Mitigation Strategy:

Ensure that property in or adjacent to wildland areas is reasonably protected from wildland fire hazard, consistent with the maintenance of a viable natural ecology. Continue on going inspection programs of hazardous fuel and abatement on vacant parcels.



Responsible Dept. Fire

Funding: City of Hemet General fund

Status: Ongoing

*Hazards Material:*

Mitigation Strategy:

Provide for the safe disposal of hazardous materials to protect the City against a hazardous materials incident

Responsible Dept: Public Works and FIRE

Funding: City of Hemet General Fund

Status: Ongoing

#### ON-GOING MITIGATION STRATEGY PROGRAMS

The City of Hemet has many ongoing mitigation programs that help create a more disaster-resistant community.

The following is a list of those programs:

Weed abatement, throughout the city, in order to reduce the risk of brush/vegetation fires in areas of overgrowth.

Wildland Urban Interface Strategic Pre Planning

Emergency Operations Plan

Local Hazard Mitigation Plan

The City of Hemet is preparing residents for emergencies. Following a major disaster, first responders who provide fire and medical aid will not be able to meet the immediate need of their services. The Community Emergency Response Team (CERT) Program provides for community self-sufficiency in order to meet the general public's urgent life-saving and sustenance needs until emergency personnel arrive. The Community Emergency Response Team (CERT) Program educates people about disaster preparedness and trains them in basic response skills, such as fire safety, light search and rescue, and disaster medial operations. Using their training, CERT members can assist others in their neighborhood or workplace following an event and can take a more active role in preparing their community. Every year the City of Hemet instructs over 100 residents in Basic CERT and also provides training in Shelter Management and First Aid/CPR/AED for Advanced CERT members who have successfully completed the requirements.

### 7.3 FUTURE MITIGATION STRATEGIES

The City of Hemet plans to reduce the flood risk associated with the Seattle Basin by adhering to the proposed plan with the property owner adjacent. This plan would tie in the existing pump system with the drainage systems needed in the land development project. Until that time the city will continue to mitigate flood hazards by monitoring the basin, clearing debris, notifying residents and setting up additional pumps to divert water away from residential property, prior to inclement weather forecasts.

The City of Hemet continues to work on local, county and state projects now and in the future that will mitigate all hazards the city might face. New ordinances and regulations set at the federal and local levels continue to direct the city with making the necessary changes to improve our preparedness, response and recovery.

## SECTION 8.0 - PLAN IMPLEMENTATION AND MAINTENANCE PROCESS

Mitigation efforts occur before and after emergencies or disasters. Post-disaster mitigation is part of the recovery process. This process eliminates or reduces the impact an identified hazard may have on the City of Hemet. Mitigation activities are designed to reduce the damage sustained by a disaster that may happen in the future. Mitigation activities may include:

- Amending local ordinances and statutes, (zoning, building, etc.)
- Initiating structural retrofitting measures
- Assessing tax levies
- Flood control projects
- Diminishing fuel located in wildfire prone areas
- Training community members in CERT
- Identifying hazards and developing mitigation plans

The City of Hemet Local Hazard Mitigation Plan is intended to be an active document that will be updated annually and submitted to the county every five (5) years, to be included in the County of Riverside Multi-jurisdictional Hazard Mitigation Plan. The updates and maintenance of the LHMP will be the responsibility of the City of Hemet's Emergency Services Coordinator, with the guidance of department directors and supervisors. Any public comments pertaining to the plan will be gathered and may be considered in future plan updates.

## SECTION 9.0 - INCORPORATION INTO EXISTING PLANNING MECHANISMS

The City of Hemet has incorporated the Local Hazard Mitigation Plan by implementing into the Safety Element of the City General Plan which includes a discussion of fire, earthquake, flooding and severe weather. This plan was revised and adopted April 2015. This plan was adopted as an implementation appendix to the Safety Element. In addition, the City enforces the requirements of the California Environmental Quality Act (CEQA), which, since 1988, requires mitigation for identified natural hazards. The City has used these pre-existing programs as a basis for identifying gaps that may lead to disaster vulnerabilities in order to work on ways to address these risks through mitigation.

## SECTION 10.0 - CONTINUED PUBLIC INVOLVEMENT

The City of Hemet is dedicated to involving the public directly in the review and update process of the Local Hazard Mitigation Plan. Upon completion and approval of the five (5) year Local Hazard Mitigation Plan a PDF version will be available on the City of Hemet website, Facebook and Next Door for public comment for an appropriate amount of time. The City of Hemet encourages its volunteers and residents to review the plan and send all questions or comments to the City of Hemet Emergency Services Coordinator.


# APPENDIX A – PUBLIC NOTICES AND MAPS

- Via Social Media – Next Door – November 11, 2016. There were a total of twenty five (25) residents that thanked the City of Hemet and one (1) resident commented.

### Inbox » Local Hazard Mitigation Plan

Conversation between you and Mike F. from El Grande Estates


---



**Mike F.** 11 days ago  
Thank you Karen for posting this report.

It is amazing how some people can complain when they are given something for free. I found this report very interesting and worthwhile reading. It's nice to know planning like this takes place.  
I found the population growth projections, number of jobs and list of major employers interesting. If someone were looking for employment, that information would be very useful.  
It was nice to see where I live in relation to the flood zone, although the map is not as close-up as I would have preferred.

---



**Mike F.** 10 days ago  
We will be posting the newest version is a few weeks. Thanks Mike.

- Via Website - <http://www.cityofhemet.org/DocumentCenter/View/4222> – November 15, 2016. Fire Chief Scott Brown informed residents and the City of Hemet City Council, on the 2012 LHMP resource available on the City of Hemet website. Questions and comments would be directed to [jmills@cityofhemet.org](mailto:jmills@cityofhemet.org).



APPENDIX B – INVENTORY WORKSHEETS

SEE ATTACHMENT

## APPENDIX C – PLAN REVIEW TOOL/CROSSWALK

SEE ATTACHMENTS